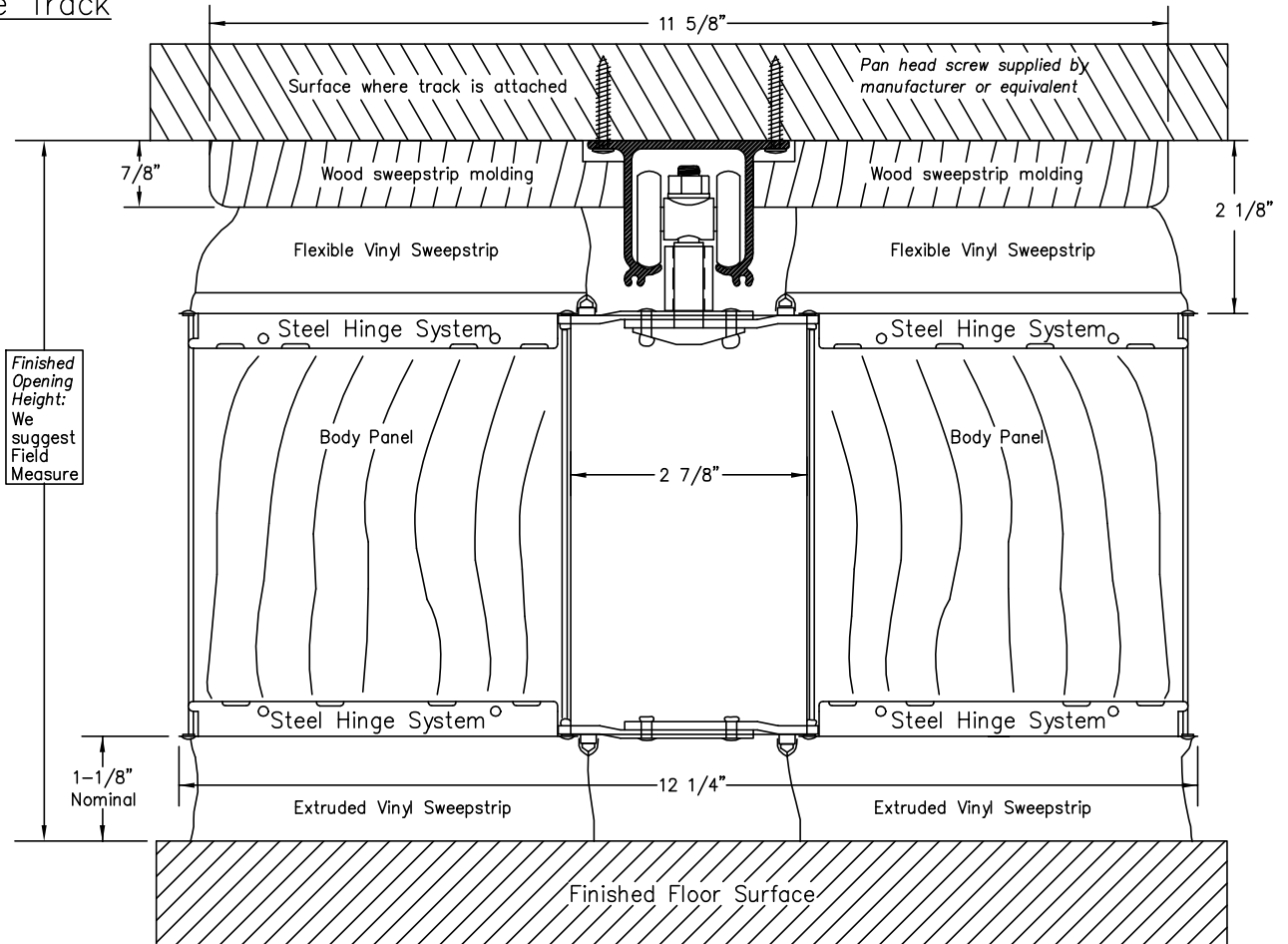
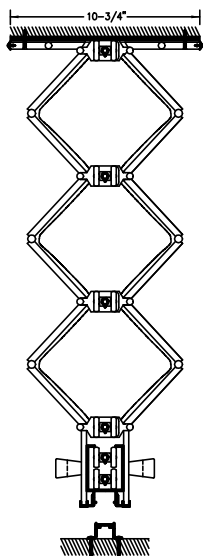


Surface Track

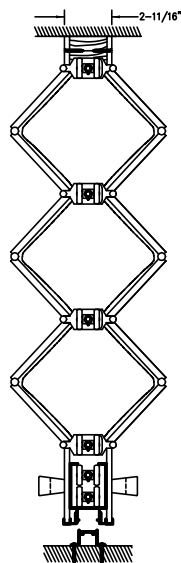


Mounting Panel Options

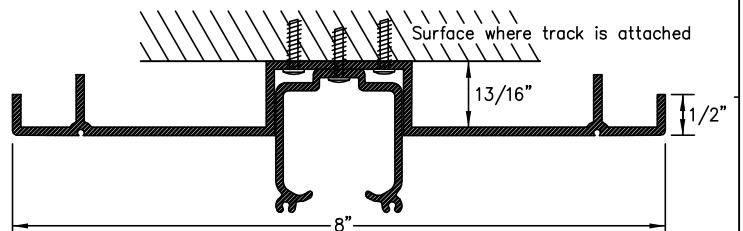
Flush Jamb Panel (Specify)



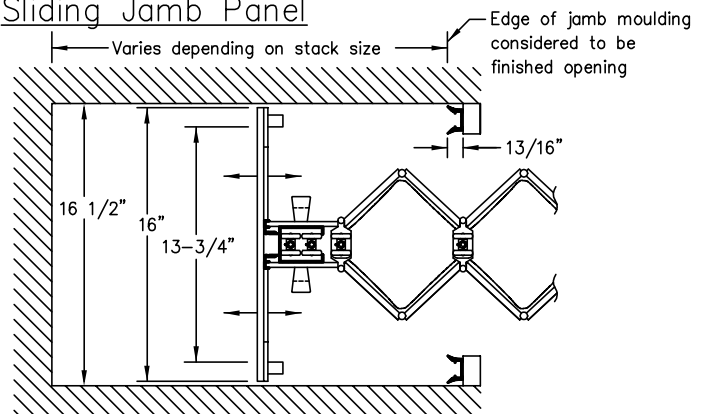
Post Jamb Panel (Specify)



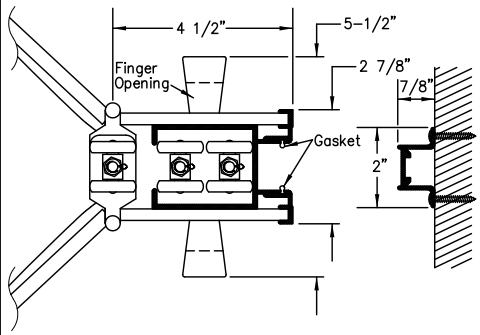
Optional Ceiling Guard Track



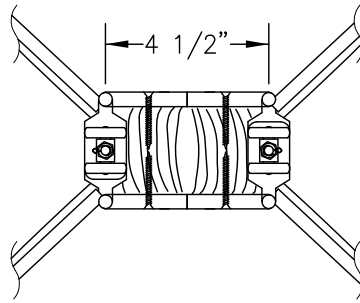
Sliding Jamb Panel



Lead Post, Jamb Moulding & Handle

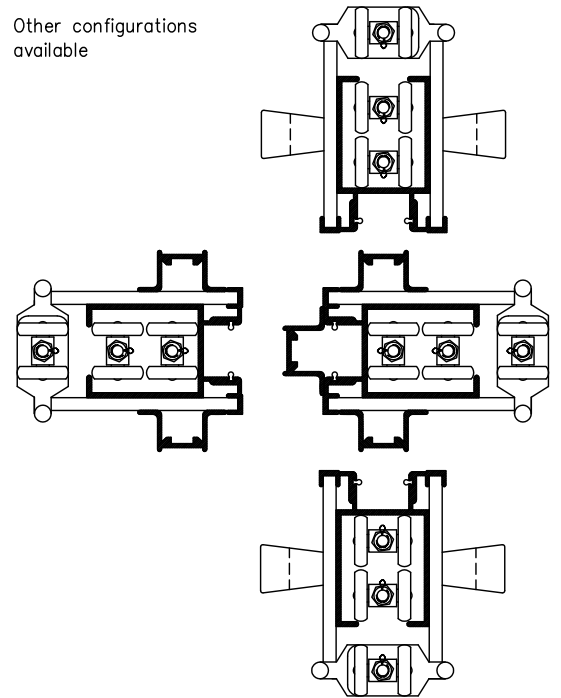


Intermediate Rolling Post



Multiple Meeting Options

Other configurations available



INFORMATION

Width	Custom made to any width Maximum door section is 15' -0"								
Height	Use intermediate posts for wider openings. Vinyl lam custom made to 12' -1" Hardwood veneer custom made to 10' -1"								
Panels	Natural hardwood or vinyl-lam on MDF core								
Panel Connector	Extruded Vinyl: White, Brown or Sand								
Sweep Strip	Extruded Vinyl: White or Brown								
Hinge System	Steel: Dark Bronze or Clear								
Wheels	1 1/8" Ball bearing nylon wheels on steel axles								
Track	Aluminum (straight only): Clear								
Ceiling Guard & Track	Aluminum (straight only): Clear								
Lead and Jamb	Aluminum: White, Brown or Sand Coordinated with panel connector								
Intermediate	Faced to match body panel selection								
Latch	Deadlatch with thumb turn two sides								
Stack Dimension	2" perlineal foot plus 4-1/2" for each lead								
Header	Construction Details by Others								
Door Weight	<table border="0"> <tr> <td><u>Height</u></td> <td><u>Average Weight</u></td> </tr> <tr> <td>8'-1"</td> <td>28lbs. Per lineal foot</td> </tr> <tr> <td>10'-1"</td> <td>35lbs. Per lineal foot</td> </tr> <tr> <td>12'-1"</td> <td>42lbs. Per lineal foot</td> </tr> </table>	<u>Height</u>	<u>Average Weight</u>	8'-1"	28lbs. Per lineal foot	10'-1"	35lbs. Per lineal foot	12'-1"	42lbs. Per lineal foot
<u>Height</u>	<u>Average Weight</u>								
8'-1"	28lbs. Per lineal foot								
10'-1"	35lbs. Per lineal foot								
12'-1"	42lbs. Per lineal foot								

Catch/Lock Options

Magnet	Magnet with strike plate
Privacy Latch	Deadlatch with thumb turn one side
Springlatch	Springlatch with thumb turn two sides
Keylock 1 Side	Deadlatch with thumb turn one side, keylock one side
Keylock 2 Side	Deadlatch with keylock two sides
Single Cremone	Single cremone bolt with keylock
Double Cremone	Double cremone bolt with keylock
Footbolts	Locking or non locking
Other Keyed Options	Keyed alike, custom keyed, construction core Contact manufacture for more details

See Woodfold Accordion Door brochure for additional details

Architects Acceptance

Job Name: _____
 Job Location: _____
 Supplier: _____

Field Sound Transmission Class: The Accordion door (Series 3300) has a field sound transmission class (FSTC) rating of 33. Field tests were performed by BRUCK, RICHARDS, CHAUDIERE INC., Seattle, Washington following the procedures specified in ASTM designation (Feb. 1994).

Qty.	Single/Pair	Single End/Double End	Left or Right Stack	Width X Height	Finish/Color	Comments

THESE SPECIFICATIONS ARE SUBJECT TO CHANGE WITHOUT NOTICE